

IMPORTANT: To activate the alarm, press and hold the “Test/Silence” button for 3 seconds, release the test button after the LED lights comes on, there is a “beep” sound following. After installation, press the “Test/Silence” button to check the alarm is working.

JOBMATE®

Smoke Alarm User’s Manual

Please read and save this manual

PHOTOELECTRIC SMOKE ALARM (“HUSH FEATURE”) MODEL:GS525



Australian Standard

AS 3786:2014 Lic.SMKH25550 SAI Global

IMPORTANT INFORMATION

This alarm features a sealed lithium 3V battery which will typically give 10 years reliable service. However, the life of the battery may be reduced to less than 10 years by sustained or excessive activation of the alarm, or exposure to extreme temperature fluctuations (see DO NOT INSTALL SMOKE ALARM)

Photoelectric smoke alarms are generally more effective at detecting smouldering fires which smoulder for hours before bursting into flame. Sources of these fires may include cigarettes burning in couches or bedding.

PRODUCT SPECIFICATIONS:

POWER: built-in DC3V(CR123A) Lithium battery (battery not replaceable)

OPERATION CURRENT: <8uA (quiescent), <70mA (alarm)

ALARM VOLUME: >85dB(A) at 3 meters.

ALARM SENSITIVITY: 0.1-0.17dB/m

SILENCE TIME: approx. 10 minutes

SMOKE ALARM DEVICE SOUND PATTERN:

ISO8201 (BI 0.5s - pause 0.5s – BI 0.5s – pause 0.5s – BI 0.5s – pause 1.5s, with the red LED flash, repeat this alarm pattern).

COMPLY WITH: AS3786:2014

SOUND PATTERN: ISO8201



IMPORTANT SAFETY INFORMATION

1. This smoke alarm requires a constant working 3-volt battery to operate properly. This smoke alarm WILL NOT work if device is not activated, has failed, been interrupted for any reason, had the battery removed, drained or improperly connected. DO NOT connect this smoke alarm to any other smoke alarm or auxiliary device. It is designed as a stand alone unit.
2. The Test/Silence button accurately tests all smoke alarm functions. DO NOT use any other test method. Test smoke alarm weekly to ensure proper operation.
3. DO NOT remove or disconnect battery to quiet unwanted alarms. This will remove your protection. Open windows or fan the air around smoke alarm to silence it.
4. Observe and follow all local and national building codes for installation.
5. This smoke alarm is designed to be used inside a single room only. In multi-room buildings, each individual living unit should have its own smoke alarm. This smoke alarm is not a substitute for a complete alarm system.
6. Smoke may not reach the smoke alarm for many reasons. For example, if a fire starts in a remote part of the home, on another level, in a chimney, wall, roof, or on the other side of a closed door, smoke may not reach the smoke alarm in time to alert household members. A smoke alarm will not promptly detect a fire except in the area or room in which it is installed.
7. Smoke alarms may not alert every household member every time. The alarm sound is loud in order to alert individuals to a potential danger. However, there may be limiting circumstances where a household member may not hear the alarm (i.e. outdoor or indoor noise, sound sleepers, drug or alcohol usage, the hard of hearing, etc.). If you suspect that this smoke alarm may not alert a household member, install and maintain specialty smoke alarms. Household members must

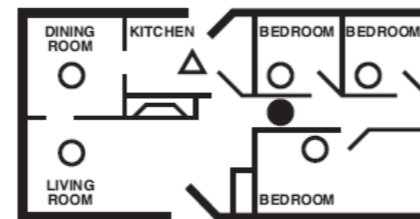
hear the alarm’s warning sound and quickly respond to it to reduce the risk of damage, injury, or death that may result from fire. If a household member is hearing impaired, install special smoke alarms with lights or vibrating devices to alert occupants.

8. Smoke alarm can only sound their alarms when they detect smoke. Smoke alarms detect combustion particles in the air. They do not sense heat, flame or gas. This smoke alarm is designed to give audible warning of a developing fire. However, many fires are fast-burning, explosive, or intentional. Others are caused by carelessness of safety hazards. Smoke may not reach the smoke alarm QUICKLY ENOUGH to ensure safe escape.

9. Smoke alarms have limitations. This smoke alarm is not foolproof and is not warranted to protect lives or property from fire. Smoke alarms are not a substitute for insurance. Homeowners and renters are responsible for insuring their own lives and property. In addition, it is possible for the smoke alarm to fail at any time. For this reason, you must test the smoke alarm weekly and replace within 10 years.

SMOKE ALARM PLACEMENT

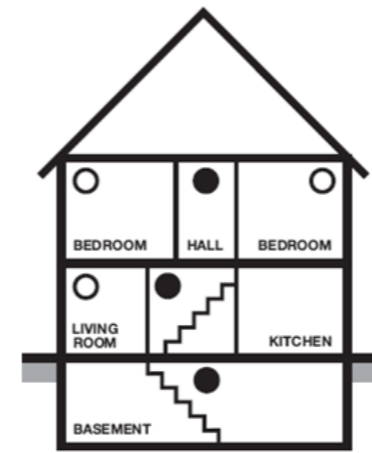
1. Install smoke alarms in the immediate area of bedrooms (see diagram 1).
2. Place smoke alarms in hallways and living rooms. If your hallway or room is more than 9.1m (30ft) long install smoke alarms at both ends.
3. Install at least one alarm on every floor level (see diagram 2).
4. Install additional alarms to monitor any stairway as stairways act like chimneys for smoke and heat.
5. Smoke and heat rise to the ceiling and spread horizontally. Mounting the smoke alarm on the ceiling in the center of the room places it closest to all points in the room.
6. When mounting an alarm on the ceiling, locate it at a minimum of 30cm (12 in) from the side wall (see diagram 3).
7. When mounting an alarm on a sloped, peaked or cathedral ceiling, locate it between 500 and 1500mm from the highest point of the ceiling (see diagram 4).



- Smoke Alarms for Minimum Protection
- Smoke Alarms for Additional Protection
- ▲ Ionisation Type Smoke Alarm with Alarm Silencer

Typical Single Story Home

Diagram 1



Typical Multi-Story Home

Diagram 2

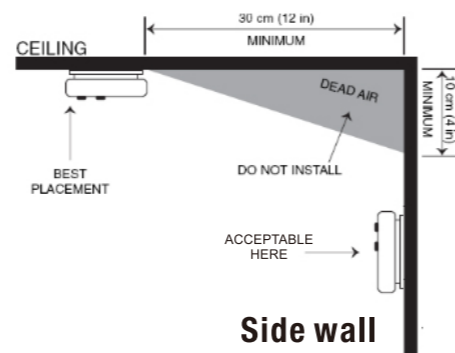


Diagram 3

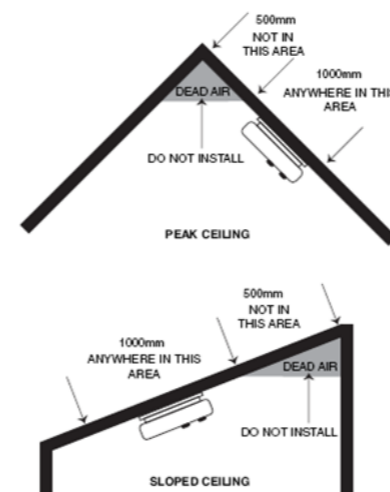


Diagram 4

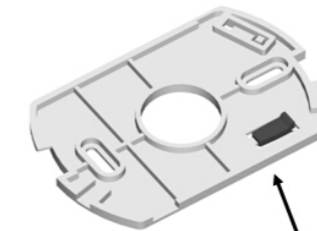
INSTALLATION:

ACTIVATION

Press and hold the Test/Silence button for 3 seconds until the LED light comes on. Release the Test/Silence button immediately after this. The unit will generate a ‘beep’ sound which indicates that the alarm is activated (on work status)

Caution: The alarm must be activated, or else the unit will not work.

1. Remove the mounting bracket from the back of the alarm by holding the bracket and twisting the alarm counter clockwise.
2. Hold the mounting bracket against the selected installation position and mark the centre of the holes with a pencil.
3. Drill holes through the pencil marks. Make sure the diameter of the holes is 5mm. Strike the enclosed plastic plugs into the holes using a hammer.
4. Remove the fixing plug from the bracket with a screwdriver (See Diagram 5).
5. Align the mounting bracket with the plastic plugs and fix enclosed screws into the plugs to secure the bracket against the wall (see Diagram 6).
6. Fit the alarm on the bracket and turn it clockwise until it locks into place.
7. Insert fixing plug to the gap between bracket and bottom cover to secure the alarm in the bracket (see Diagram 7).
8. Press the “test” button once to test the unit. The alarm will beep 3 times (with a 1.5 second pause between each beep). If the alarm doesn’t make a beeping sound, the unit is either defective or hasn’t been activated. Refer to “Trouble shooting” for a solution or return to your retailer during warranty.
9. If you have any questions on installation you can contact your retailer.



Remove the fixing plug with screwdriver

Diagram 5



Insert fixing plug

Diagram 7

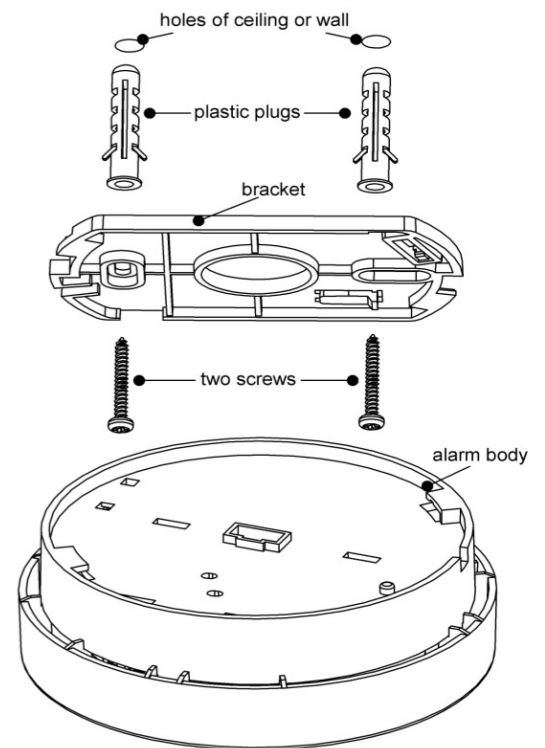


Diagram 6

DO NOT INSTALL SMOKE ALARM :

1. Near appliances or areas where normal combustion regularly occurs (kitchens, near furnaces, hot water heaters). Use specialised smoke alarm device with unwanted alarm control for these areas.
2. In areas with high humidity, like bathrooms or areas near dishwashers or washing machines. Install at least 3 metres (10 feet) away from these areas.
3. Near air returns or heating and cooling supply vents. The air could blow smoke away from the detector, interrupting its alarm.
4. In rooms where temperatures may fall below 5°C or rise above 45°C, or in humidity higher than 85%. These conditions will reduce battery life or cause a fault alarm.
5. In extremely dusty, dirty, or insect – infested areas influence particles interfere with smoke alarm device operation.

OPERATING YOUR SMOKE ALARM:

LED indicators

Red LED-Flashing once every 40 seconds: indicates that the smoke alarm device is operating properly.

Red LED-Flashing when the Test/Silence button is pressed, or when the smoke alarm device senses particles of combustion and goes into alarm (constant pulsating sound), the red LED will flash once per second. The flashing LED and pulsating alarm will continue until the air is cleared or release Test/Silence button.

Red LED-Alarm silencer (Hush mode) indication: The red LED will flash once every 8 seconds, indicating the smoke alarm device is in the alarm silence (Hush) mode.

Low battery indication – An intermittent chirp with red LED flashes every 40 seconds: indicates that the battery of the smoke alarm device is low. You may press the Test/Silence button to temporarily silence the alarm but it will reset automatically after 10 hours.

Fault indication – The alarm chirp occurs every 40 seconds.

NOTE: When the unit chirps every 40 seconds, you can press the Test/Silence button to temporarily silence the alarm for 10 hours. During this time the smoke alarm can still detect smoke, it's only the nuisance warning tone that gets removed.

TESTING THE SMOKE ALARM:

Test the unit to ensure proper operation by pressing the test button, this will sound the alarm if the electronic circuitry, horn, and battery are working. If no alarm sounds, there is a defective battery or other failures, you can refer to “Trouble shooting” section for solution.

DO NOT use an open flame to test your alarm, you could damage the alarm or ignite combustible materials and start a fire.

CAUTION: Due to the loudness (85 decibels) of the alarm, always stand an arms-length away from the unit when testing.

Test the alarm weekly to ensure proper operation. Erratic or low sound coming from your alarm may indicate a defective alarm, you can refer to “Trouble shooting” section for solution.

NOTE: WEEKLY TESTING IS REQUIRED.

ALARM SILENCE (SILENCE MODE):

If the smoke alarm goes off you can push the Test/Silence button to pause the unit for about 10 minutes. The red LED light will flash once every 8 seconds to indicate that the smoke alarm device is running in the silence mode. Combustion particles from cooking may set off the alarm if the alarm is located close to the cooking area.

Large quantities of combustible particles are generated from spills or when grilling/frying. Using the fan on a range hood that vents to outside (non-recirculating type) will also help remove these combustible particles from the kitchen. The alarm silence (test button) is extremely useful in a kitchen area or other areas prone to nuisance alarms. The silence feature is to be used only when a known alarm condition, such as smoke from cooking activates the alarm.

The smoke alarm device is desensitised by pushing the alarm Test/Silence button (silence mode) on the smoke alarm device cover, the alarm will silence to indicate that the alarm is in a temporarily desensitised condition.

The smoke alarm device will automatically reset after approximately 10 minutes, if after this period, particles of combustion are still present, the alarm will sound again.

The alarm silencer (silence mode) can be repeated until the air has been cleared of the condition causing the alarm.

CAUTION: Before using the alarm silence, identify the source of the smoke and be certain a safe condition exists.

NOTE: Dense smoke will override the alarm silencer and will sound a continuous alarm again.

DANGER: If the alarm sounds, and it is not being tested, it means the unit is sensing smoke, **THE SOUND OF THE ALARM REQUIRES YOUR IMMEDIATE ATTENTION AND ACTION.**

IMPORTANT: To activate the alarm, press and hold the “Test/Silence” button for 3 seconds then release the test button after the LED lights comes on. There will be a “beep” sound following. After installation, press the “Test/Silence” button to check the alarm is working.

MAINTENANCE AND CLEANING:

1. Regular weekly testing is required!

2. You must reactivate alarm before use if you deactivate it

3. The alarm should be cleaned at least once a year

1. To clean your alarm, remove it from bracket on ceiling, you can clean it by using compressed air or a vacuum cleaner hose with a soft brush attachment. Blow or vacuum around the perimeter of the alarm to remove dust, dirt, and debris. The outside of the alarm can be wiped with a damp cloth but avoid water entering the alarm.

2. After cleaning, reinstall it and test it by pressing the Test/Silence button. The alarm should be replaced if cleaning can't restore the alarm to normal operation.

3. This alarm has a low battery monitor which will cause the alarm to “chirp” approx every 40 seconds and the red LED flashes once at the same time for a minimum of thirty days when the battery gets low.

If there is a defective battery or other failures, you can refer to “Trouble shooting” index for solution. If there are still failures during warranty, return to your retailer. Don't paint the unit. Paint will seal the vents and interfere with the sensor's ability to detect smoke.

IMPORTANT: Do not attempt to remove the cover to clean inside. This will affect warranty.

4.Replacing the Alarm

It is recommended this alarm should be replaced ten years from the date of manufacture. This date has been provided on the product label which is located on the back of the alarm.

WARNING: The battery is sealed in cover and not replaceable. Please replace with another new alarm if the low battery chirp occurs.

REPAIR:

If the alarm is not operating properly, and is still under warranty, return it to the original place of purchase.

If the alarm is no longer under warranty, please replace it immediately with a comparable alarm.

Caution: Do not attempt to repair the alarm. It will affect your warranty.

HOW TO DEACTIVATE THE SMOKE ALARM:

Press Test/Silence button and hold it for about 10 seconds until LED flashes rapidly (flash 5 times per second), then press Test/Silence button rapidly for at least 6 times within 5 seconds (or within during LED flashes rapidly), and the unit will generate a “beep” which indicates the smoke alarm goes into inactivation status. The smoke alarm will not work in this status, you must reactive it before use. Please refer to the installation instructions below for activating the product.

PRACTICE FIRE SAFETY:

If the alarm sounds, and you have not pushed the Test/Silence button, it is a warning of a dangerous situation, your immediate response is necessary. To prepare for such occurrences, develop family escape plans, discuss them with all household members, and practice them regularly.

1. Expose everyone to the sound of a smoke alarm device and explain what the sound means.
2. Determine two exits from each room and an escape route to the outside from each exit.
3. Teach all household members to touch the door and use an alternate exit when the door is hot, instruct them not to open the door if the door is hot.
4. Teach household members to crawl along the floor to stay below dangerous smoke, fumes and gases.
5. Determine a safe meeting place for all members outside the building.

WHAT TO DO IN CASE OF FIRE:

1. Do not panic; stay calm.
 2. Leave the building as quickly as possible. Touch doors to feel if they are hot before opening them. Use an alternate exit if necessary. Crawl along the floor, and do not stop to collect anything.
 3. Meet at a pre-arranged meeting place outside the building.
 4. Call the fire department from outside the building.
 5. Do not go back inside a burning building. Wait for the fire department to arrive.
- Note: These guidelines will assist you in the event of a fire, however to reduce the chance that fires will start, practice fire safety rules and prevent hazardous situations.

TROUBLE SHOOTING:

Problem	Trouble shooting
Smoke alarm device does not sound when tested.	1. Must activate alarm before installation. 2. Clean smoke alarm device. Please refer to the “maintenance and cleaning” section.
The alarm “chirp” with red LED flashes once every 40 seconds.	The battery is under low battery status, please replace the smoke alarm device.
Smoke alarm device chirp occurs every 40 seconds (alarm goes into fault mode).	1. Clean smoke alarm device. Please refer to the “maintenance and cleaning” section. 2. Temperature has dropped below 5°C.
Smoke alarm device sounds, unwanted alarms intermittently or when residents are cooking, taking showers, etc.	1. Press Test/Silence button to pause alarm. 2. Clean smoke alarm device. Please refer to the “maintenance and cleaning” section. 3. Move smoke alarm device to new location and press Test/Silence button.
The alarm sounds different than I'm used to. It starts and stops.	The alarm is operating correctly. The alarm features the internationally recognized horn signal for evacuation. The alarm sound pattern is 3 short beeps followed by a 1.5 second pause and then repeats.
Smoke alarm activates in the middle of the night.	The operating temperature of the smoke alarm is between 5°C to 45°C. Sometimes during the night, if the temperature drops below 5°C, this can set off a false alarm. Press the Test/Silence button to pause the alarm, move the device to new location (refer DO NOT INSTALL SMOKE ALARM).

WARRANTY INFORMATION:

Company warrants to the original consumer.

Purchase each new smoke alarm device to be free from defects in material and workmanship under normal use and service for a period of 10 years from the date of purchase. This warranty does not cover damage resulting from accident, misuse or abuse or lack of reasonable care of the product.

In no case shall company be liable for any incidental or consequential damages for breach of this or any other warranty express or implied.



**Manufactured in China for Mitre 10 (New Zealand) limited
67 Corinthian Drive, Albany, Auckland, 0632, New Zealand**