

ARMOR

Irreversible electromechanical gear motor with jointed arm for swing gates.

PRODUCT CODE:

ARMOR-2-24

LEAF:

Max 2.50m wide

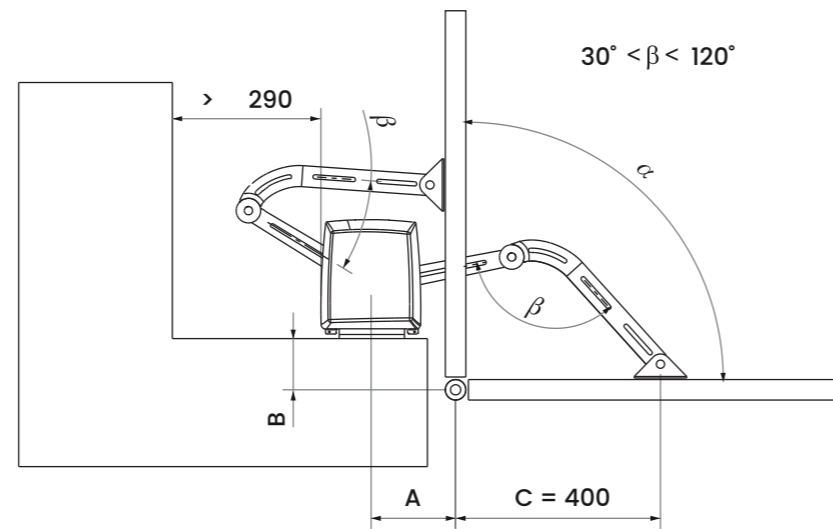
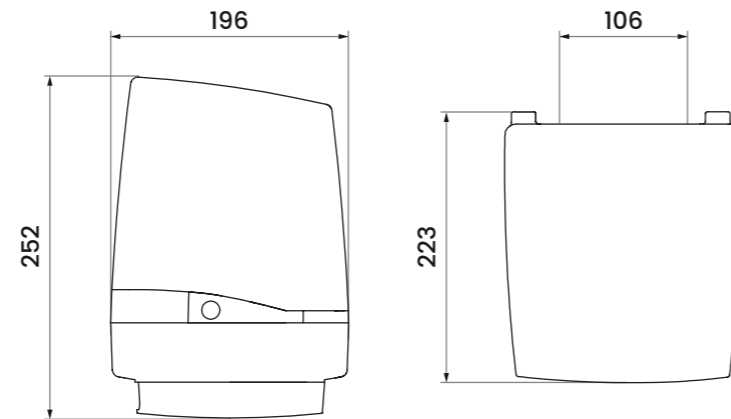
MOTOR:

24V DC

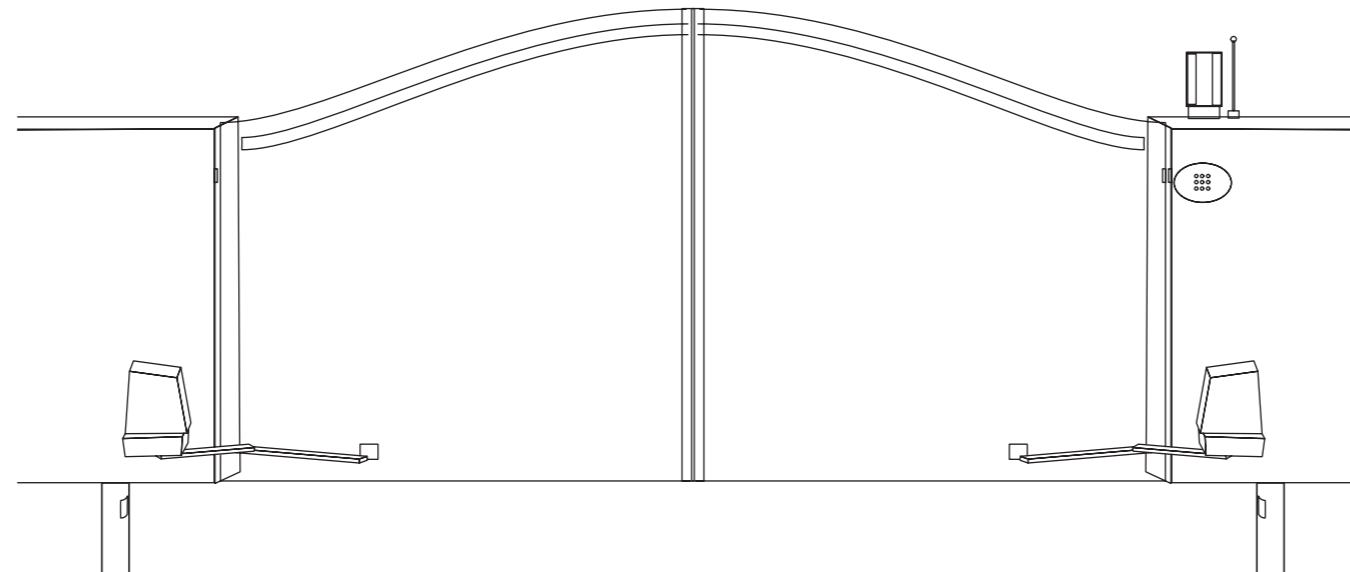
DESCRIPTION:

Irreversible gear motor. Model equipped with mechanical stop for opening and closing. Control unit not fitted on board.

Dimensions

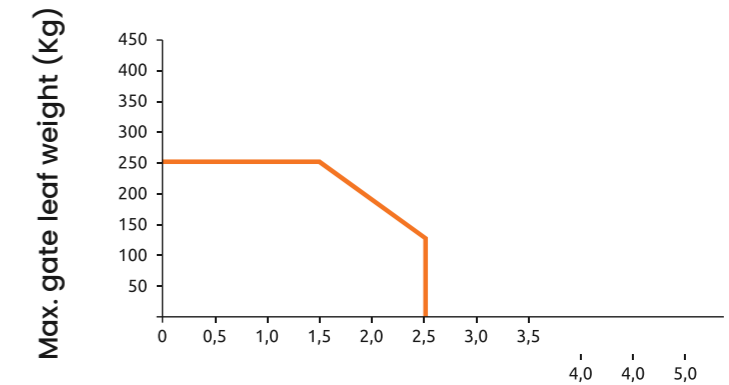


NB. Angle β to be kept between 30° and 120° to achieve optimum release.



Technical Specifications

Max. gate leaf length (m)	2.50
Mains power supply (V)	230V 50 Hz
Motor power supply (V)	24V DC
Power (W)	40
Torque (Nm)	170
Operating T° (°C Min/Max)	- 20 + 70
Protection class (IP)	44
Work intermittence (%)	80
Time to cover 90° (s)	14



NB. In windy areas or when the gate has a particular structural shape, we advise reducing the limits on above weight/width.

Irreversible electromechanical gear motor with jointed arm for swing gates. External fitting.