

Nouveau®

Usb Mini Air Cooler



This manual applies to the following products
SKU: 361432 / Model: VU-180

Nouveau.

Table of Contents

Important Safety Instructions

Product Introduction

Operation of the Appliance

Transportation

Water Releasing

Maintenance and Cleaning

Storage

Trouble Shooting

Please read this manual carefully before use, and keep for further guidance

Nouveau.

Important Safety Instructions

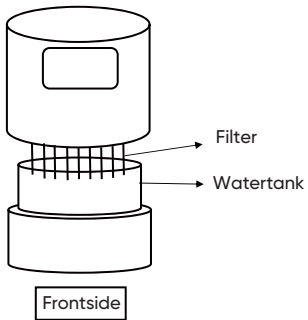
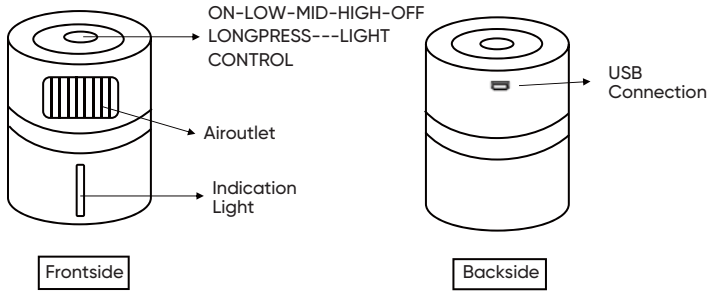
1. Use the correct power supply (DC 5V).
2. The appliance will work correctly when placed on a smooth horizontal surface. Tilting it may cause a water leak and damage the appliance.
3. Do not carry the appliance when it is filled with water. Even after you empty the reservoir, some water will still remain in the internal compartment. Please check the part of this manual about the appliance transportation.
4. For personal safety and proper functionality of the appliance use only clean, untainted tap water. If the source of the water is polluted and you are not sure about its safety, please use distilled water. It is recommended to perform the cleaning and technical maintenance of the appliance according to the "Appliance maintenance" section of this product guide.
5. This appliance is not intended for use in a highly polluted environment. Large dust particles, dirt, etc., can seriously affect the longevity of the appliance's evaporative cartridge lifecycle.
6. Make sure water does not reach the external parts of the appliance. Do not use it near water, in a swimming pool, in a bathroom, in a laundry room, outdoors when raining or at any other locations with high humidity levels.
7. In case of a leak or if water spills to the surface of the appliance, immediately disconnect the power cord and let the appliance dry for at least 24 hours.
8. Do not place the appliance under direct sunlight.
9. If you do not plan to use the appliance for a long time, empty the water reservoir and let the appliance work at maximum power for at least 4 hours so that the cartridge can dry out.
10. Only use the original power supply from the package.
11. Do not touch the power supply or power cord with wet hands.
12. Unplug the appliance in case of the following: cleaning, technical maintenance, removing/replacing elements, moving the appliance.
13. To maximize the effect the appliance should be placed on a higher surface, e.g. a table or a cupboard.
14. Do not place the appliance next to a heater or in proximity of any electrical equipment.
15. Do not place the appliance in passageways or any other location from where it can be accidentally knocked over.
16. Do not let any foreign objects inside the appliance.
Do not place heavy items on top of the appliance.

Nouveau.

17. Do not block the front grills of the appliance.
18. Do not turn the appliance upside down; it will disrupt its functionality.
19. Do not submerge the appliance into water or other liquids, see cleaning guide below.
20. Do not place open fire sources (candles, etc.) on top of the appliance.
21. People with limited physical, visual or mental abilities or lacking proper
22. experience and/or knowledge should never use the appliance without supervision of those responsible for their safety or those capable of assistance in using the appliance.
23. The appliance can be switched off completely only when disconnected from the power supply.
24. The manufacturer does not bear any responsibility for any damage arising from failure to comply with this product guide.
25. If your special filter and water tank ha been broken or damaged, you can purchase a replacement with your local retailer.
26. Avoid exposing unit to water or spraying water onto the control panel or LED. Do not use any corrosive cleaner or solvent.
27. Before storage, please dry the water tank inside the unit and then take out and dry the filter in order to avoid stink caused by dampness.
28. Unplug power source when not in use.

Nouveau.

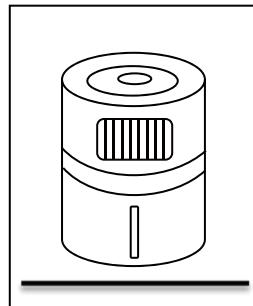
Product Introduction



Operation of the Appliance

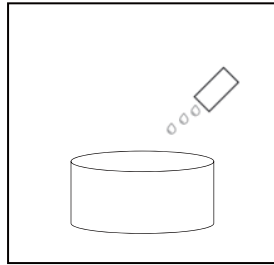
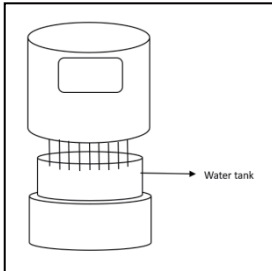
Attention: Open cover, remove poly bag from filter before using.

1. Place the appliance on a smooth horizontal surface.

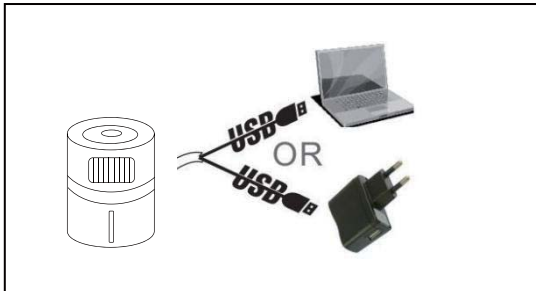


Nouveau.

2. Twist off the water tank and filled with water or ice



3. Use the cable to connect power supply to the appliance. Long press the buttons on top key, the Indication lights will be on. The light is color gradient.




4. Press  to start the appliance and select fan speed.

- Press 1 time, the appliance running in low speed.
- Press 2 times, the appliance running in middle speed.
- Press 3 times, the appliance running in high speed.

The temperature of the outgoing air will start to decrease in a few minutes.

5. To get better cooling effect, you can use the ice pack.

6. Press  for 3s, LED indicator will turn on, if no need the indicator light, press it again for 3s to turn off.

7. Both LED and fan can operate independently. You can operate the fan or operate the Led light or operate fan and Led light.

Important: During the first use, the filter is dry and needs to be thoroughly wet through, please fill the water tank and soak the filter completely.

Nouveau.

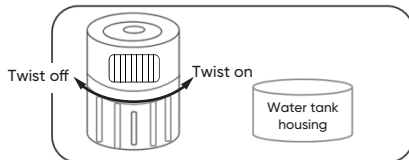
Transportation

Before any kind of transportation, the appliance should be disconnected from the power source.

Before transportation, please empty water from the water tank.

Water Releasing

1. Disconnect the appliance from the power source.
2. Twist off the water tank.
3. Raise the appliance vertically to make sure water will not leak.
4. Put the upper half into another half.



5. Release water.
6. Twist on the water tank.

Attention: filter can be re-used. If cotton swabs are dirty, you can clean them.

Maintenance and Cleaning

1. Switch off and disconnect the power supply before cleaning.
2. Do not allow water or other liquids to run into the interior of the appliance, especially in the motor and fan blades.
3. Wipe the body of the appliance with a dry, soft cloth.
4. We also recommend the periodic cleaning of this appliance by lightly running a vacuum cleaner nozzle over the guards to remove any dust or dirt that may have accumulated inside or on the unit.

Storage

Clean the appliance, dry it and place in a package (original package is recommended). Store in a dry space.

Important:


- Do not put the appliance into a bag, box or other container before it is

Nouveau.

completely dry.

- Fully replace the water in the reservoir at least once a week.
- Use a soft cloth to clean the inside part the appliance. Do not clean the appliance with gasoline, window washing liquid or any organic dissolvent. Warranty does not cover damages caused by improper cleaning.
- Do not wipe the inside of the cartridge, just its outer plastic body.
- Do not stick fingers into the air outlet when the appliance is in operation.

Trouble Shooting

Problem	Possible cause	Solution
The appliance does not turn on	The appliance is not connected to power supply	Connect to a power supply
	The appliance has been turned off via the control panel	Press  to start the appliance
Cold air does not come out of the appliance	The airflow level is on min	Working on higher speed
The temperature drop is minimal	The appliance is out of water	Fill up the water tank
	The filter has expired	Replace the filter
	The humidity level in the room is too high	Ventilate the room
There is water next to the appliance	The appliance has been pushed	Wipe the water and dry the appliance



You can help protect the environment!

Please remember to respect the local regulations: hand in the non-working electrical equipments to an appropriate waste disposal centre.

MADE IN CHINA