

Nouveau®

OIL COLUMN HEATER

OPERATING INSTRUCTIONS



Model: NHOC100, NHOC120, NHOC140

General Care and Safety Guide

YOUR SAFETY IS IMPORTANT TO US. PLEASE ENSURE YOU TAKE NOTE OF THE INSTRUCTIONS AND WARNINGS OUTLINED IN THIS MANUAL.

CAUTION: In order to avoid a hazard due to inadvertent resetting of the thermal cut-out, this appliance must not be supplied through an external switching device, such as a timer, or connected to a circuit that is regularly switched on and off by the utility.

- This appliance is not intended for use by persons (including children) with reduced physical, sensory or mental capabilities or lack of experience and knowledge, unless they are supervised or have been given instruction concerning the use of the appliance by a person responsible for their safety.
- Children should be supervised to ensure that they do not play with the appliance.
- If the supply cord is damaged, it must be replaced by the manufacturer, its service agent or similarly qualified persons in order to avoid a hazard.

WARNING: You must not cover this heater. Covering this heater presents fire risk and will activate the safety fuse; permanently disabling the unit.

WARNING: Do not use this heater in small rooms when they are occupied by persons not capable of leaving the room on their own, unless constant supervision is provided.

WARNING: To reduce the risk of fire, keep textiles, curtains, or any flammable material a minimum distance of 1 metre from the air outlet.

- Use only the voltage specified on the rating label of the appliance.
- The heater must not be located immediately below a socket outlet.
- Keep all objects at least 1 metre from the front, sides and rear of the appliance.
- This appliance is intended for household use only and not for commercial or industrial use.
- Indoor use only.
- Use this appliance only as described in this manual. Any other use is not recommended by the manufacturer and may cause fire, electric shock or injury.
- Do not use the heater if it has been dropped or damaged.
- The common cause of overheating is deposits of dust or fluff in the appliance. Ensure these deposits are removed regularly by unplugging the appliance and vacuum cleaning the air vents and grills.
- Always unplug appliance when not in use.
- When the appliance has been unpacked, check it for transport damage and ensure all parts have been delivered. If parts are missing or the appliance has been damaged, contact the Customer Services Team.
- Do not use if there are visible signs of damage to the heater.

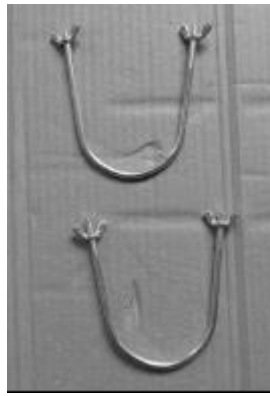
General Care and Safety Guide

- Never use the appliance to dry clothes.
- Do not connect the appliance to mains supply until completely assembled and adjusted.
- Ensure hands are dry before handling the plug or main unit.
- Ensure heater is on a flat, stable, heat-resistant surface.
- Do not operate with cord set coiled up as a heat build up is likely, which could be sufficient to become a hazard.
- Carry out regular checks of the supply cord to ensure no damage is evident
- Do not operate this appliance with a damaged cord, plug or after the appliance malfunctions or has been dropped or damaged in any manner. Return to a qualified electrical person for examination, electrical service or repair.
- Do not twist, kink or wrap the cord around the appliance, as this may cause the insulation to weaken and split. Always ensure that all cord has been removed from any cord storage area and is unrolled before use.
- It is recommended that this heater is plugged directly into the wall socket. Power boards are not rated to supply power to high wattage appliances.
- A correctly specified, undamaged extension cord may be used with this heater provided it is used in a safe manner.
- Do not remove plug from power socket until the appliance has been switched off.
- Do not remove plug from power socket by pulling cord; always grip plug.
- Do not place cord under carpet or cover with rugs or furniture. Arrange the cord so it cannot be tripped over.
- Don't place appliance on bedding or on thick & long carpet where the openings may get blocked.
- Switch off and use handle provided when moving
- Do not place appliance close to radiant heat source.
- Do not insert or allow foreign objects to enter any ventilation or exhaust opening, as this may cause an electric shock, fire or damage to the appliance.
- Do not sit on the appliance.
- Do not use abrasive cleaning products on this appliance. Clean with a damp cloth (not wet) rinsed in hot soapy water only. Always remove plug from the mains supply before cleaning.
- Do not operate in areas where petrol, paint or other flammable liquids are used or stored.
- Do not use this appliance in the immediate surrounds of a bath, a shower, or a swimming pool or other liquids.
- The appliance must not be immersed in any liquids.
- There are no user serviceable parts installed in the unit.
- Do not place the unit in wardrobes or other enclosed spaces as this may cause fire hazards.
- This unit is not supposed to be used in or around locations where foodstuffs, works of art or delicate articles of science, etc. are stored.
- If your appliance does not work, or is not working properly, contact the place of purchase or the Customer Services Team.

COMPONENTS



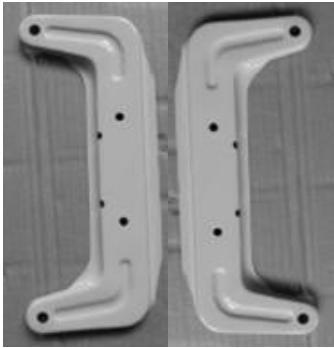
Main Body x1



U-shape Bolt x2



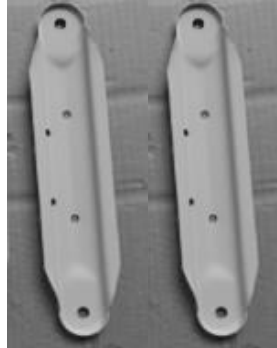
Wing Nut x4



5 Fin Castor Plates x2



7 Fin Castor Plates x2



11 Fin Castor Plates x2



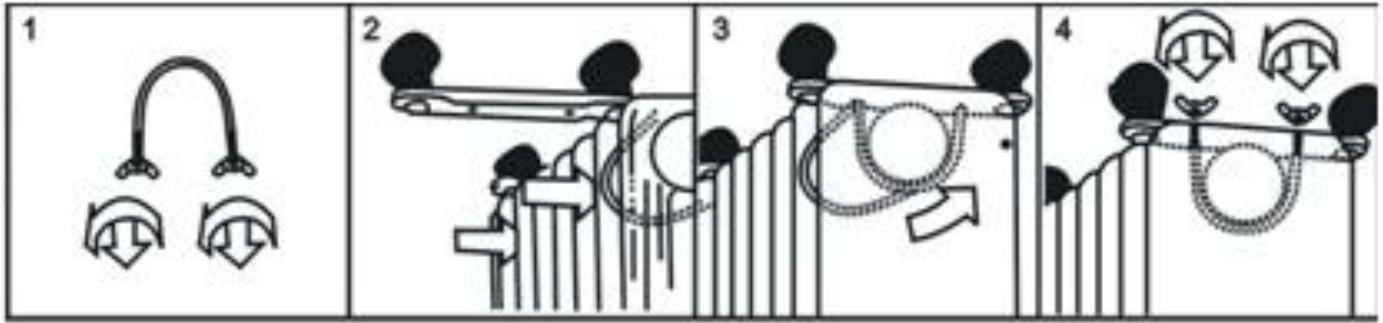
Castor Wheels x4

DIAGRAM



1. Carry handle	4. Cord storage
2. Thermostat knob	5. Radiant fins
3. Power setting knob	6. Castor

ASSEMBLY



ASSEMBLY OF THE HEATER

1. Remove the dome nut from the castors, fit castor thread through the castor mounting plate. Replace dome nut and tighten.
2. Place the radiator body upside-down on a scratch-free location, make sure it is stable and will not fall. Be careful to prevent damage to the cosmetic finish or your floor surfacing.
3. Unscrew the wing nuts from the U-shaped bolt provided, fit the U-shaped bolt over the connector between control panel and second fin.
4. Insert the threaded ends of the U bolt in the holes on the C shaped castor plate (for 5 or 7 fin model) or straight castor plate for the 11 Fin model. Note the C shaped castor plate should be placed with the castors pointed towards the control panel.
5. Screw the wing nuts back to the U bolt and tighten the wing nut securely.
Note: do not over-tighten, which may cause damage to the heater.
6. Repeat steps 3, 4 and 5 on the rear of the heater for mounting of the rear castors. For the 5 fin model the C shaped castor plate should be placed with the castors pointed out the back of the heater.
Note: the rear castors must be mounted between the end two fins.

IMPORTANT: Please fit the wheel assemblies as per the diagram. Any other position may affect the stability of the heater.

WARNING: Only operate the heater in normal upright position with wheel assemblies attached to the bottom, any other position could create a hazardous situation.



5 Fin Castor Plates



7 Fin Castor Plates



11 Fin Castor Plates

Operating Your Heater

Always choose a safe location for the heater, keeping in mind the safety precautions outlined. Ensure all packaging has been removed from the unit before use. Please follow the below instructions.

WARNING: In order to avoid overheating or fire, do not cover the heater.

WARNING: Keep all objects at least 1 metre from the front, sides and rear of the appliance.

WARNING: Do not use this heater with a programmer, separate timer, remote-control system or any other device that switches the heater on automatically, since a fire risk exists if the heater is covered or positioned incorrectly.

WARNING: Never leave this heater unattended when in use.

Ensure heater is on a flat, stable, heat-resistant surface.

Once the heater is in a safe operating position and all switches are in the off position, insert the power plug into the mains outlet.

CAUTION: Ensure the power cord is not tight because if pulled it may partially pull the plug from the socket. A partially inserted plug will overheat the plug and socket and could result in fire.

HEAT CONTROL SWITCH

The control switch positions are:

- 0 Off
- I Low Heat
- II Medium Heat
- III High Heat

HEAT CONTROL SWITCH



THERMOSTATIC CONTROL



Check that the power On/Off switch is set to Off position before plugging the heater into the mains supply. For greater economy, use the High Heat setting initially and then switch to the Low Heat setting.

THERMOSTATIC CONTROL

1. Rotate thermostat knob clockwise until you reach the maximum position.
2. When the room reaches a temperature that is comfortable for you, slowly turn the knob anti-clockwise until the heater just turns off (you will hear a click).
3. The heater will now cycle on and off to maintain the comfort level you have set.

Operating Your Heater

SAFETY DEVICES

This appliance has three protection devices:

- Tilt Switch - this will automatically turn the appliance off if the appliance is not in the correct operating position.
- Resettable Thermal Link - this will automatically disconnect the power to the appliance at a pre-set overheat temperature. After cooling down it will reset and power on again. If this occurs, investigate what is causing the appliance to overheat.
- Thermal Fuse - this disconnects the appliance permanently in case of overheating. (It is non resettable).

CAUTION: The heater generates heat during use. Proper precautions must be taken to prevent the risk of burns, scalds, fires or other damage to persons.

CARE AND CLEANING

- The heater requires regular cleaning to ensure trouble free operation:
- Unplug the heater from the mains supply before cleaning.
- Ensure that the heater has been allowed to cool down completely before cleaning.
- The common cause of overheating is deposits of dust or fluff in the appliance. Ensure these deposits are removed regularly by unplugging the appliance and vacuum cleaning the air vents and grills.
- **Use a damp cloth (not wet) to wipe the exterior of the heater to remove dust and dirt.**
- **Never use solutions such as petrol, thinners or polishing agents.**
- **Ensure the heater is dry before plugging back into the mains supply.**

This heater is filled with a precise quantity of special oil. Repairs requiring opening of the oil container are only to be made by the manufacturer or his service agent who should be contacted if there is an oil leak. When scrapping the heater, follow the regulations concerning disposal of oil.

TECHNICAL SPECIFICATIONS

Model No:	NHOC100	NHOC120	NHOC140
Supply:	220-240VAC 50/60Hz	220-240VAC 50/60Hz	220-240VAC 50/60Hz
Wattage:	650W	1000W	2000-2400W

PROOF OF PURCHASE

To receive warranty retain receipt as proof of purchase.

Nouveau.

SUPPORT AND TECHNICAL ADVICE

North Shore City, Auckland, New Zealand

Monday – Friday 8am-5pm

Phone: 0800 232 633

Nouveau®

TWO YEAR WARRANTY

Thank you for purchasing this Nouveau product. Your product is warranted against factory faults when used in a normal domestic setting for a period of two years from the date of purchase. Valid proof of purchase will be required. As the product is intended for home use only, commercial usage of this product for professional or industrial purposes will VOID this warranty.

Should your product be faulty, it may be replaced, repaired or refunded during the warranty period, as deemed appropriate by the retailer.

This warranty excludes damage caused by misuse, neglect, shipping accident, incorrect installation, or work carried out by anyone other than a qualified electrical service technician.

PLEASE KEEP YOUR RECEIPT AS THIS WILL HELP VERIFY YOUR WARRANTY.

This warranty is additional to the conditions and guarantees of the Consumers Guarantee Act (1993).

Nouveau – New Zealand
67 Corinthian Drive
Albany
Auckland 0632
New Zealand
Phone 0800 232 633

Nouveau Two Year Warranty (IMPORTANT: Please complete and retain this warranty card)

Name

Address

Place Of Purchase

Date of Purchase

Name Of Product

Model Number

Attach a copy of the purchase receipt to this warranty card

Due to continual design improvements, the product illustrated in this User Manual may differ slightly from the actual product.